

2



2



1

## Top Floor, City Views, Rooftop Pool..

Primely positioned in the heart of Newstead, Brisbane's most prominent inner-city suburb, is this spectacular top floor two bedroom, two bathroom and one car park with storage apartment inside Tom Dooley's acclaimed Gasworks Residences.?

Situated on level 14 with sweeping city and Teneriffe Hill views, stunning design and world-class features are the hallmarks of this dazzling home. Superior amenities on offer include generously sized bedrooms, upgraded wooden floors, ducted air-conditioning, ample storage, private balcony access with external sliding louver panels for privacy, separate study, LED lights and glass splashbacks. Elsewhere within the award-winning building, residents can unwind at the rooftop retreat which boasts a gymnasium, yoga terrace, heated 25m wet edge pool and private sunken courtyards. Elevate your standard of living as the owner of this gorgeous property which won't stay on the market for long.

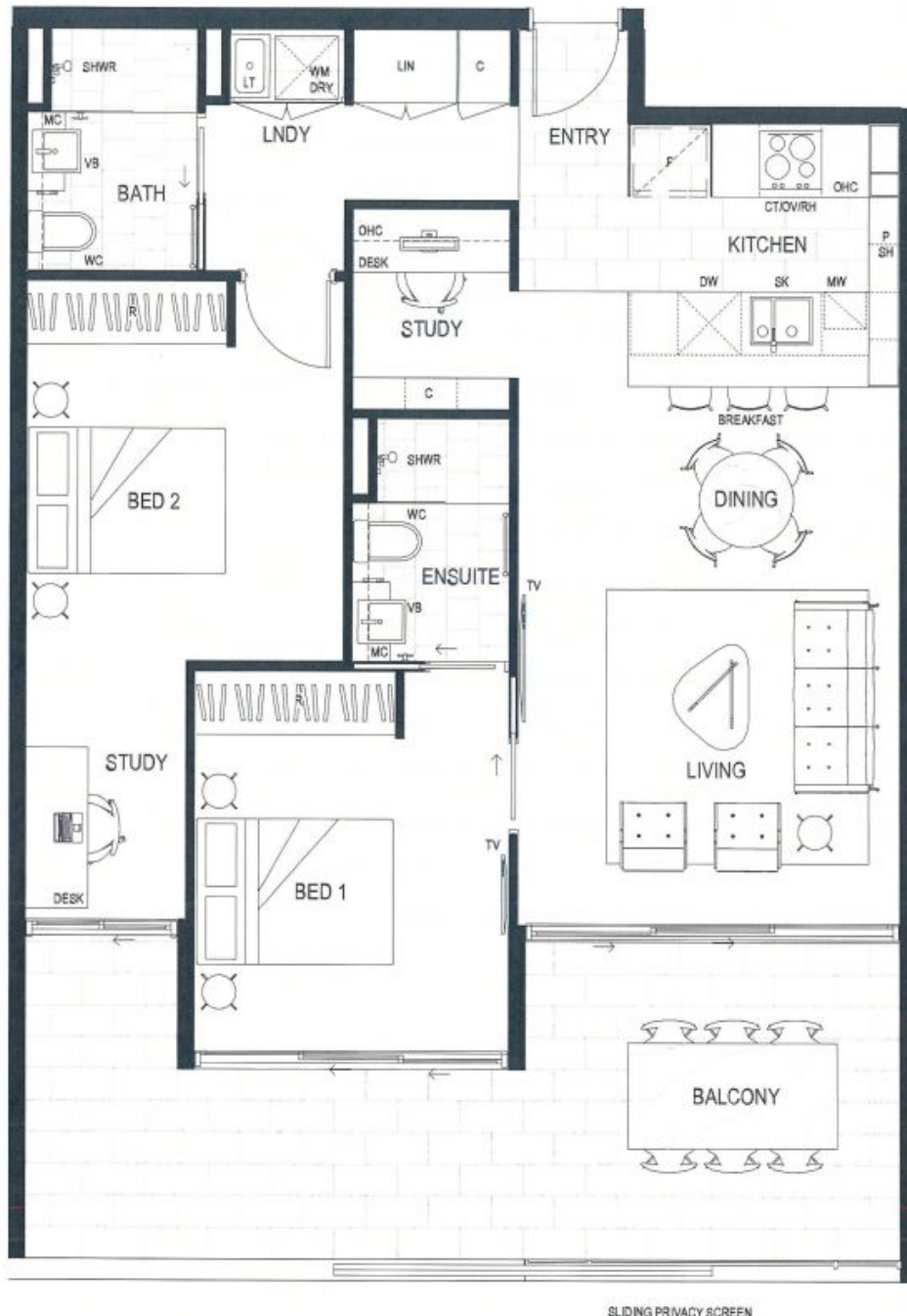
### Property Features:

- Body Corporate: \$1018 qtr approx
- Rates: \$325 qtr approx
- Storage unit in car park
- Located on the top level being 14

**Price:**
**\$670,000**

**Robert Lamprecht**

0419 999 989



SLIDING PRIVACY SCREEN

**GASWORKS**  
RESIDENCES

APARTMENT  
**TYPE 12**



MP 12 P8 1:60  
NOTE: ALL UNITS SHOW CURRENT DESIGN, SUBJECT TO CHANGE AS FOLLOWS: 1. SIZE OF APARTMENTS OR UNITS MAY VARY BY 5%. 2. LOCATION OF FURNITURE AND FITTINGS MAY CHANGE. 3. WINDOWS MAY VARY IN SIZE AND LOCATION. 4. FURNITURE AND EQUIPMENT NOT INCLUDED. 5. FLOOR PLANS ARE INDICATIVE ONLY, SUBJECT TO FURTHER CHANGE.