



2



2



1

Tri-level Townhouse, Stones Throw From It All.

(Entry Via Victoria Street)

Price:

\$562,500

Perched atop of the inner-city suburb of Bowen Hills, this unique tri-level townhouse with dual entry access is nothing short of amazing.

Entering through the quaint courtyard, which serves as a picturesque setting for entertaining guests and outdoor dining, this property is instantly alluring.

Recently renovated, you'll be left mesmerised by the exceptional floor plan, beautiful amenities, cross flow ventilation and ample natural light which illuminates the home and presents it in all its glory.

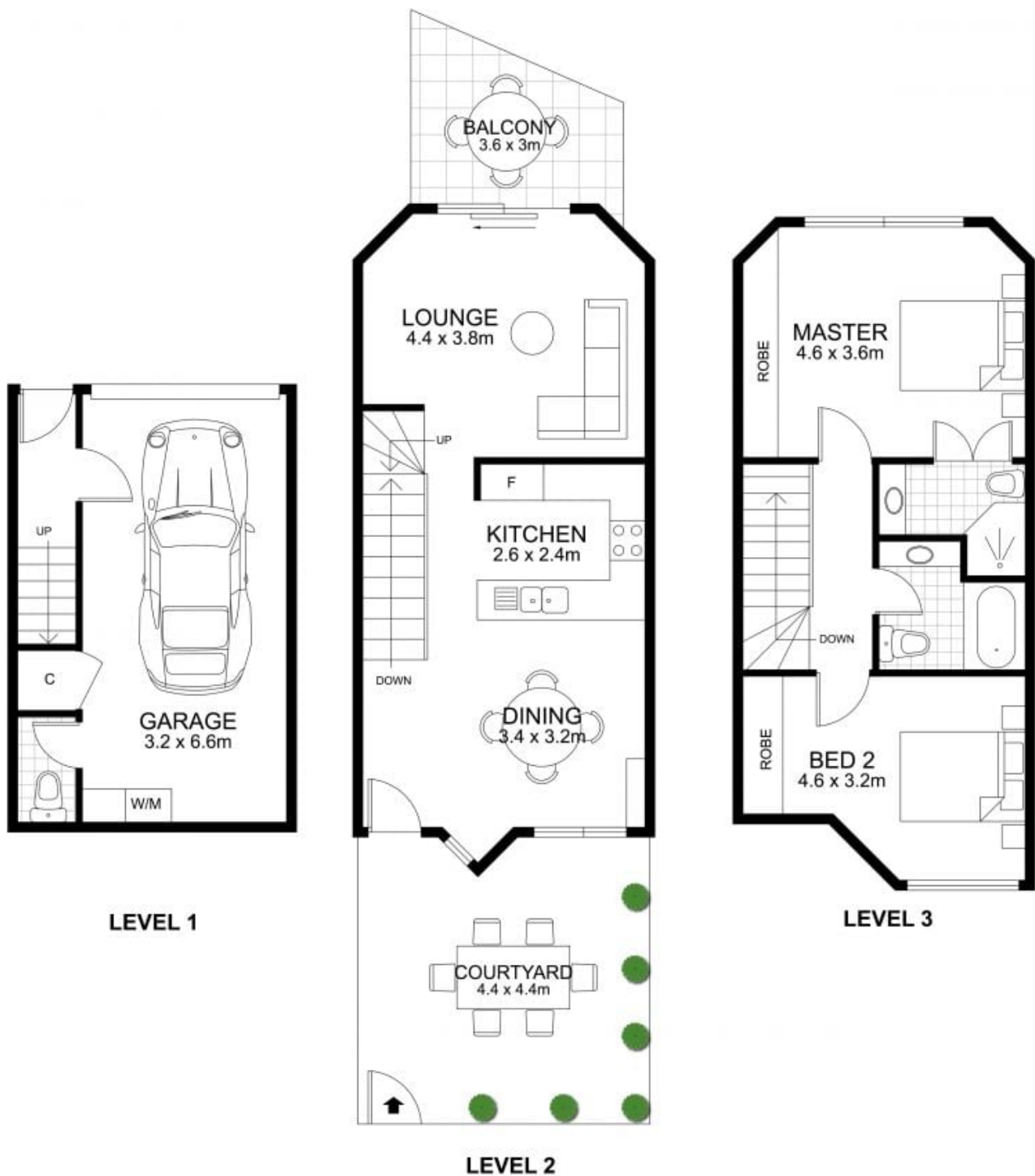
Consisting of two bedrooms, two bathrooms, one powder room and a car park across 136sqm of prime real estate, highlights include timber click flooring, ample storage, air-conditioning and stainless steel appliances.

Wonderfully incorporating a galley kitchen into the layout, gas cooktops, spacious bench tops and a wine rack make cooking a pleasure not a chore.



Robert Lamprecht

0419 999 989



Floor plan measurements are approximate and for illustrative purposes only. Scale in metres.
 Floor plan created by Rolley Photo Media. www.rolleyphotomedia.com.au

INTERNAL : 86 m²
 GARAGE : 29 m²
 EXTERNAL : 21 m²
TOTAL AREA : 136 m²



8/4 Cowlshaw Street, Bowen Hills