

2



2



1

Large Living, City Views, Brilliant Location!

This beautifully modern two bedroom two bathroom apartment located in the 'SL8' building is designed by an award winning architect & is in the heart of one of Brisbane's most vibrant districts.

Suitable for couples, friends & small families, this property hosts two large bedrooms, an ensuite & main bathroom. Built in robes, air conditioning, internal laundry & a large balcony for entertaining family & friends.

A fully appointed kitchen features a large fridge space, stainless steel appliances, dishwasher & stone bench tops. This flows through to the well sized lounge and is a light filled, neutral space.

Enjoy glimpses of Brisbane City & take advantage of being a short stroll from the ferry, bikeways & boutique stores. West End is full of trendy bars, popular restaurants & hosts the famous Davies Park markets.

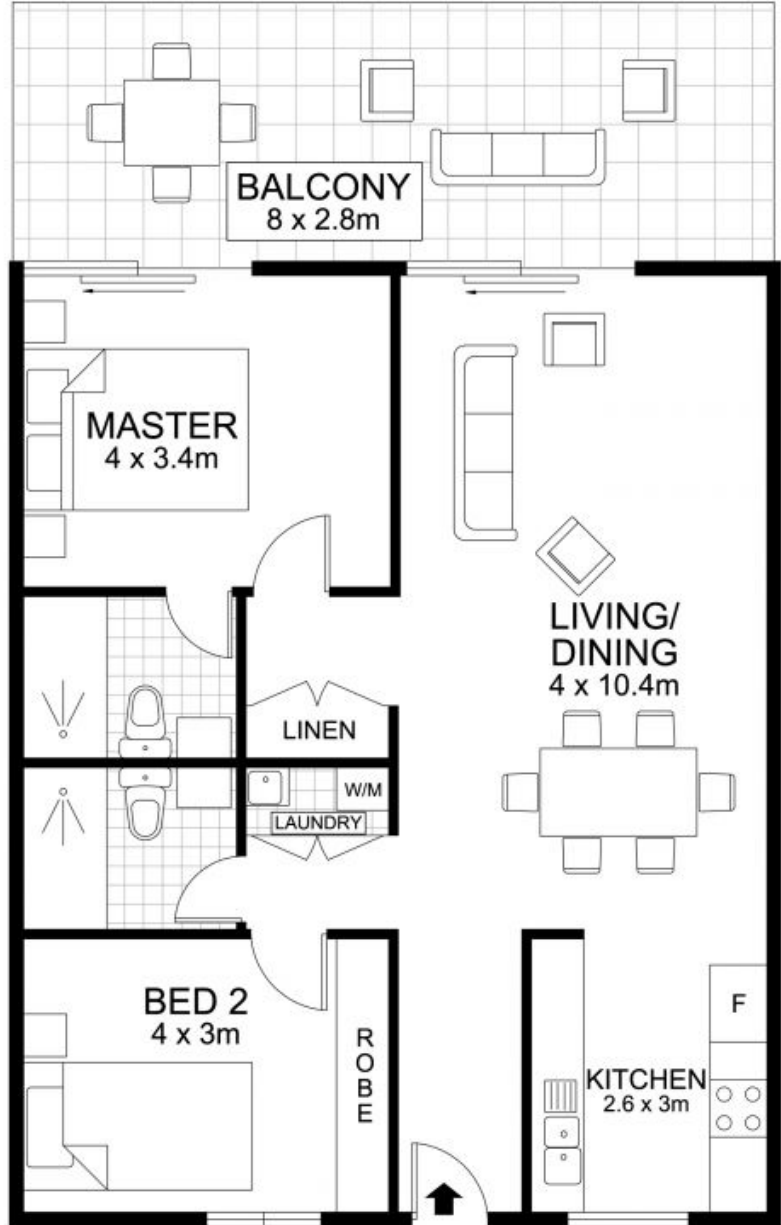
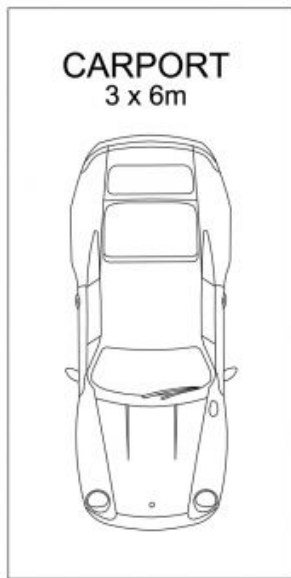
Features include:

- over \$1,170,000 in the sinking fund.
- Body Corp around \$5190 per year
- Rental \$470pw



Robert Lamprecht

0419 999 989



Floor plan measurements are approximate and for illustrative purposes only. Scale in metres.
Floor plan created by Rolley Photo Media. All rights reserved, Copyright 2016

INTERNAL : 82 m²
 CARPORT : 18 m²
 EXTERNAL : 19 m²
TOTAL AREA : 119 m²



26/8 Musgrave Street, West End

