



3



2



2

## Top Level, Spacious, Low Body Corporate! Best Value In Newstead!

Contact Robert to view the property.

If you are looking for an open plan three bedroom apartment with views both front and back, two car parking side by side, a storage unit, all located in one of Brisbane's fastest up and coming centrally located suburbs, then this is it!

Located on the top level with a dual balcony, you will feel like the king of the mountain with a leafy outlook overlooking the pool, facing towards the Brisbane River as well as city views from the second balcony.

Comprising of only 58 units, Riverstead Apartments is situated only minutes from Newstead Park, Gasworks precinct, Brisbane CBD, Teneriffe's river walk, you can enjoy a fantastic lifestyle of style and convenience.

The unit features includes:

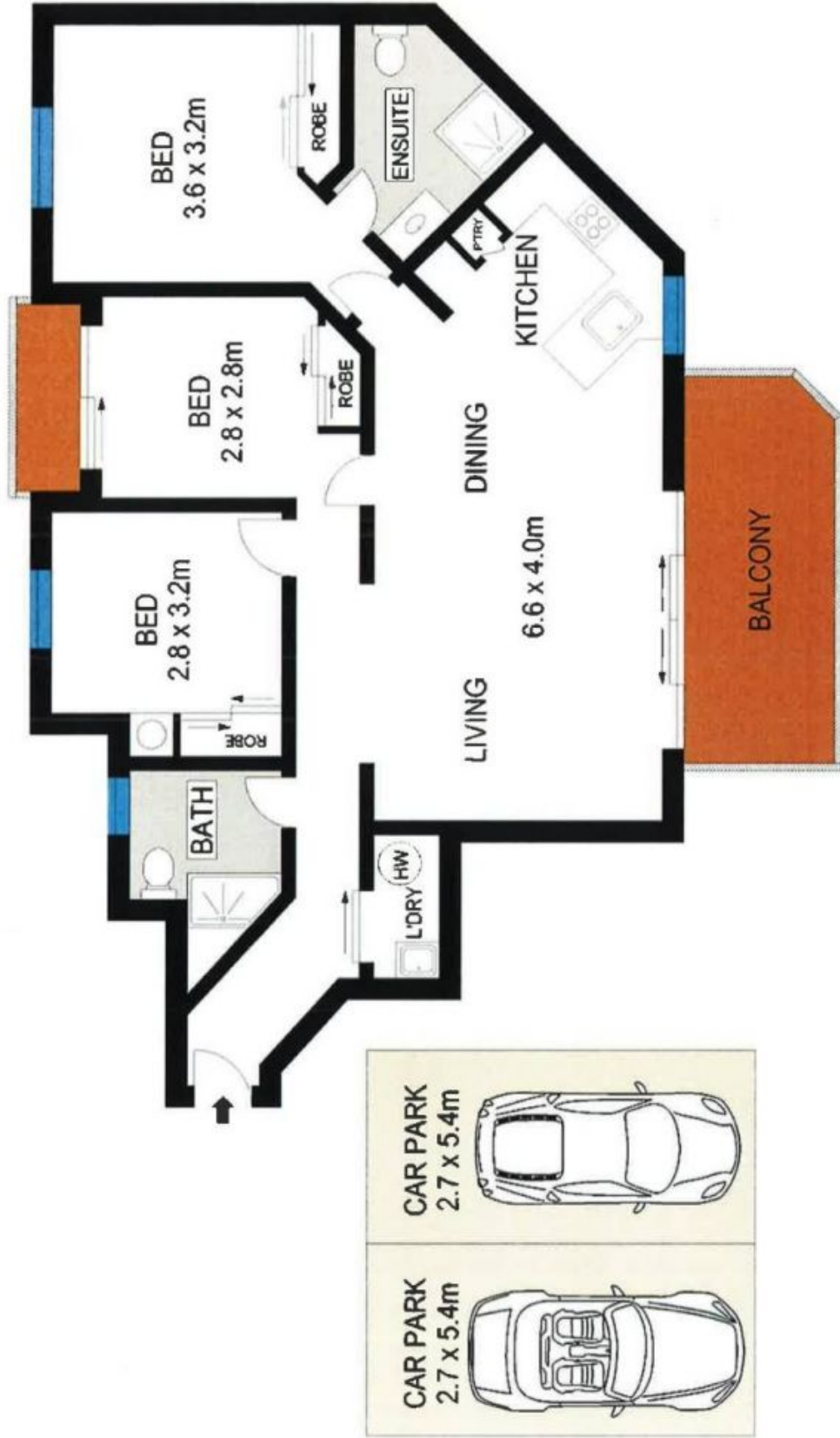
- Low Body Corporate around \$4976 per year.
- Over \$205,000 in the sinking fund

**Price:** \$565000



**Robert Lamprecht**

0419 999 989



**GROUND FLOOR**



Scale in metres, indicative only. Dimensions are approximate. All information contained herein is gathered from sources we believe to be reliable. However, we cannot guarantee its accuracy and interested persons should rely on their own enquiries.

**58/52 Newstead Terrace, Newstead**